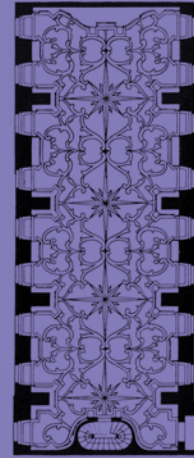
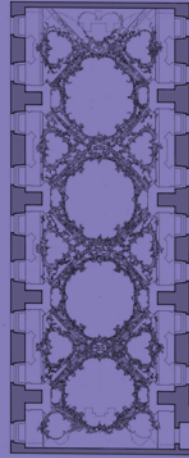
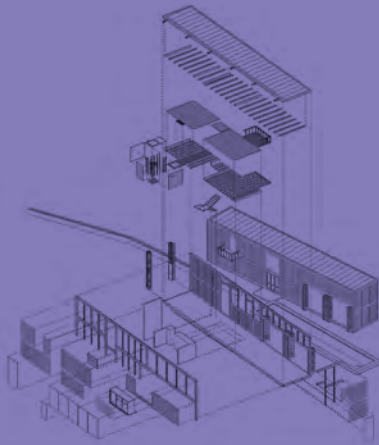


CRAFT & STRUCTURE UNIT

CORE ELECTIVE



CONSTRUCTION CULTURES

Lecturer: Carmen Rist-Stadelmann

Construction culture addresses and encompasses a variety of regional building traditions, with both historical and contemporary building methods taking centre stage. A central role is played by the analysis of past building practices, which were characterised by their adaptability and their knowledge of regional materials and building constructions. At the same time, the focus will be on current building approaches that reflect the regional building cycle as well as cultural, geographical and climatic conditions.

Our ancestors developed building methods that were characterised by their longevity and the use of locally available resources. These traditions were characterised by a high degree of adaptability to specific conditions. With the introduction of modern materials such as cement and concrete and the simplification of production and transport processes over the last 100 years, this traditional building expertise has been increasingly forgotten. Despite their sustainability and proven value, these practices were used less and less. In addition to in-depth knowledge of the availability and properties of regional materials, practical experience was a decisive factor in the construction methods of our ancestors. However, with the advent of scientific calculation methods, building practice changed fundamentally. Many traditional building structures became obsolete because they did not meet the requirements of standardised static calculations due to their complex geometry or construction method. This development led to a simplification of construction methods, both in terms of the materials used and in terms of structural diversity. The original range of building structures was reduced in favour of standardised and calculable models, which resulted in the loss of a significant part of the constructive knowledge and architectural diversity.

Construction Culture is dedicated to researching these traditional building methods and supporting structures as well as their social embedding in society - both from a historical and a contemporary perspective. As part of this study, farmhouses from regions such as the Bregenzerwald, Appenzell and Ticino are analysed as examples. In addition, a comparison is made with building and construction methods from northern Europe and Asia. The Grubermann will also be part of our investigations.

3 ECTS

SS 2026

UNIVERSITÄT
LIECHTENSTEIN

LSA

Liechtenstein School of Architecture
Craft & Structure Unit